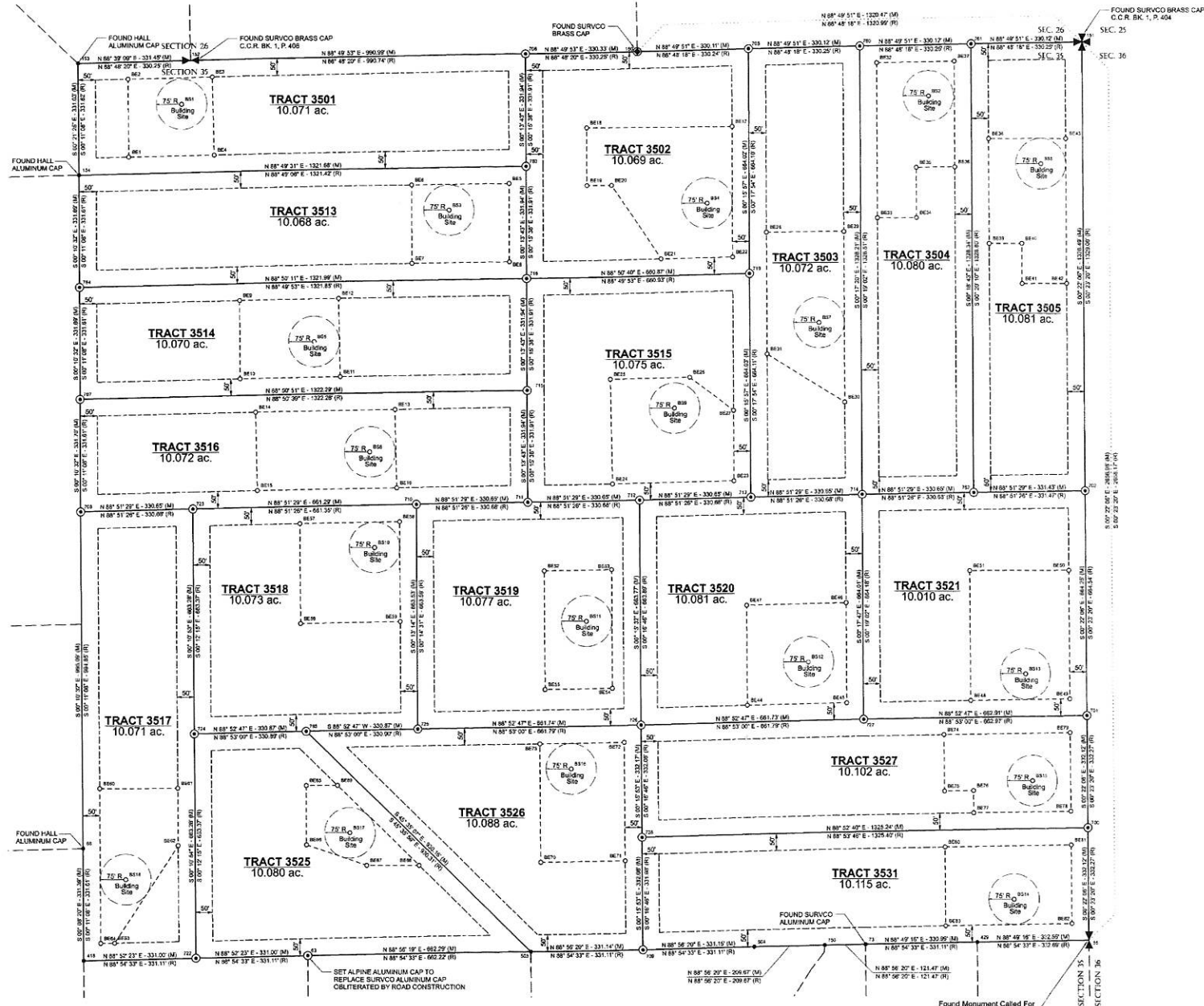


**BOUNDARY RETRACEMENT**

TRACTS 3501, 3502, 3503, 3504, 3505, 3513, 3514, 3515, 3516, 3517, 3518, 3519, 3520, 3521, 3525, 3526, 3527 & 3531  
OF CERTIFICATE OF SURVEY No. 36 & 36A  
LOCATED IN THE NE 1/4 AND THE E 1/2 NW 1/4 OF SECTION 35,  
TOWNSHIP 2 SOUTH, RANGE 7 EAST, P.M.M.  
GALLATIN COUNTY, MONTANA



Found Monument Called For in Certified Corner Recordation Book 1, p. 405. The Monument Appears To Be in Its Original Position and Is Accepted As The 1/4 Corner Common To Sections 35 & 36. The Monument Called For in Certified Corner Recordation Book 2, p. 652 Bears N24°56'00"E, 16.29 FT And Is Rejected

TRACT 3501		
BUILDING ENVELOPE		
From	To	Distance
B154	BE1	N 79° 2' 0" E - 155.52'
BE1	BE2	N 0° 21' 28" W - 231.45'
BE2	BE3	N 89° 41' 42" E - 245.1'
BE3	BE4	S 1° 18' 18" E - 231.56'
BE4	BE1	S 88° 49' 31" W - 252.72'
BE1	BE3	S 89° 44' 15" E - 1175.19'

TRACT 3502		
BUILDING ENVELOPE		
From	To	Distance
T05	BE17	S 12° 1' 22" W - 234.38'
BE17	BE18	S 89° 44' 2" W - 425.38'
BE18	BE19	S 0° 15' 58" E - 169.33'
BE19	BE20	N 89° 44' 2" E - 172.57'
BE20	BE21	S 33° 57' 25" E - 260.30'
BE21	BE22	N 88° 50' 40" E - 211.33'
BE22	BE17	N 0° 15' 58" W - 385.30'
BE17	T05	S 8° 42' 14" E - 437.49'

TRACT 3503		
BUILDING ENVELOPE		
From	To	Distance
T05	BE28	S 3° 31' 23" E - 545.61'
BE28	BE29	N 89° 44' 2" E - 230.30'
BE29	BE30	S 0° 17' 20" E - 505.53'
BE30	BE31	N 88° 17' 28" W - 172.57'
BE31	BE28	N 0° 15' 57" W - 360.14'
BE28	T05	S 3° 22' 47" W - 785.32'

TRACT 3504		
BUILDING ENVELOPE		
From	To	Distance
T05	BE32	S 45° 43' 44" E - 70.17'
BE32	BE33	S 0° 17' 20" E - 459.56'
BE33	BE34	N 89° 42' 40" E - 115.65'
BE34	BE35	N 0° 17' 20" W - 148.8'
BE35	BE36	N 88° 49' 51" E - 115.2'
BE36	BE37	N 0° 12' 47" W - 511.64'
BE37	BE32	S 88° 49' 51" W - 230.1'
BE32	T05	N 78° 44' 14" E - 285.32'

TRACT 3505		
BUILDING ENVELOPE		
From	To	Distance
T05	BE38	S 10° 27' 25" E - 283.97'
BE38	BE39	S 0° 16' 42" E - 310.03'
BE39	BE40	N 89° 41' 17" E - 96.86'
BE40	BE41	S 0° 18' 43" E - 118.45'
BE41	BE42	N 89° 41' 17" E - 153.91'
BE42	BE43	N 0° 22' 28" W - 425.28'
BE43	BE38	S 89° 40' 17" W - 230.36'
BE38	T05	N 44° 15' 13" E - 399.14'

TRACT 3513		
BUILDING ENVELOPE		
From	To	Distance
T05	BE5	S 44° 17' 54" W - 71.30'
BE5	BE6	S 89° 43' 37" W - 250.18'
BE6	BE7	S 0° 19' 43" E - 231.68'
BE7	BE8	N 88° 50' 11" E - 260.15'
BE8	BE5	N 0° 13' 43" W - 231.02'
BE5	T05	S 10° 18' 51" E - 285.52'

TRACT 3514		
BUILDING ENVELOPE		
From	To	Distance
T05	BE9	S 85° 5' 51" E - 473.14'
BE9	BE10	S 0° 10' 32" E - 231.77'
BE10	BE11	N 89° 41' 42" E - 245.1'
BE11	BE12	N 1° 9' 9" W - 231.79'
BE12	BE9	S 89° 50' 11" W - 292.78'
BE9	T05	S 82° 28' 33" E - 832.96'

TRACT 3515		
BUILDING ENVELOPE		
From	To	Distance
T05	BE23	S 42° 25' 11" W - 816.92'
BE23	BE24	S 89° 51' 29" W - 352.53'
BE24	BE25	N 1° 8' 31" W - 310.41'
BE25	BE26	S 89° 51' 29" E - 235.30'
BE26	BE27	S 52° 29' 33" E - 193.98'
BE27	BE23	S 0° 15' 57" E - 238.58'
BE23	T05	S 49° 42' 14" E - 71.18'

TRACT 3516		
BUILDING ENVELOPE		
From	To	Distance
T05	BE13	S 81° 36' 18" W - 396.61'
BE13	BE14	S 89° 51' 51" W - 412.32'
BE14	BE15	S 1° 9' 9" E - 231.79'
BE15	BE16	N 88° 51' 29" E - 412.52'
BE16	BE13	N 20° 0' 21" W - 231.83'
BE13	T05	S 55° 9' 32" E - 479.57'

TRACT 3517		
BUILDING ENVELOPE		
From	To	Distance
T05	BE50	S 42° 42' 2" E - 494.28'
BE50	BE51	N 89° 50' 1" E - 230.69'
BE51	BE52	S 0° 10' 54" E - 170.35'
BE52	BE53	S 33° 23' 13" W - 244.13'
BE53	BE54	S 89° 52' 23" W - 40.64'
BE54	BE50	N 0° 9' 11" W - 457.82'
BE50	T05	S 5° 27' 44" W - 511.13'

TRACT 3518		
BUILDING ENVELOPE		
From	To	Distance
T05	BE57	S 42° 42' 2" E - 494.28'
BE57	BE58	N 0° 13' 14" W - 205.04'
BE58	BE59	S 0° 13' 14" E - 205.04'
BE59	BE60	S 89° 51' 29" W - 295.04'
BE60	T05	S 44° 10' 58" W - 452.56'

TRACT 3519		
BUILDING ENVELOPE		
From	To	Distance
T05	BE52	S 62° 41' 38" E - 426.28'
BE52	BE53	N 89° 52' 47" E - 200.02'
BE53	BE54	S 0° 15' 32" E - 350.03'
BE54	BE55	S 89° 52' 47" W - 200.02'
BE55	BE52	N 0° 15' 32" W - 350.03'
BE52	T05	N 52° 31' 43" E - 351.17'

TRACT 3520		
BUILDING ENVELOPE		
From	To	Distance
T05	BE44	N 79° 55' 24" E - 321.17'
BE44	BE45	N 88° 52' 47" E - 255.19'
BE45	BE46	N 0° 17' 50" W - 255.19'
BE46	BE47	S 88° 52' 47" W - 255.19'
BE47	BE44	S 0° 17' 47" E - 255.19'
BE44	T05	N 27° 45' 27" W - 656.52'

TRACT 3521		
BUILDING ENVELOPE		
From	To	Distance
T05	BE48	N 79° 57' 15" E - 322.28'
BE48	BE49	N 88° 52' 46" E - 255.19'
BE49	BE50	N 0° 22' 6" W - 373.36'
BE50	BE51	S 89° 51' 51" W - 255.19'
BE51	BE48	S 0° 22' 6" E - 383.24'
BE48	T05	N 27° 49' 25" W - 687.24'

TRACT 3525		
BUILDING ENVELOPE		
From	To	Distance
T05	BE65	S 65° 3' 8" E - 364.25'
BE65	BE66	S 0° 0' 0" E - 175.73'
BE66	BE67	S 71° 8' 50" E - 185.58'
BE67	BE68	N 90° 0' 0" E - 185.69'
BE68	BE69	N 45° 35' 7" W - 338.23'
BE69	BE65	N 20° 0' 21" W - 61.61'
BE65	T05	S 5° 11' 39" E - 160.11'

TRACT 3526		
BUILDING ENVELOPE		
From	To	Distance
T05	BE70	N 8° 28' 51" E - 266.19'
BE70	BE71	N 89° 52' 47" E - 250.03'
BE71	BE72	N 0° 10' 54" W - 350.03'
BE72	BE73	S 89° 52' 47" W - 250.03'
BE73	BE70	S 0° 15' 53" E - 350.04'
BE70	T05	N 60° 53' 46" W - 794.62'

TRACT 3527		
BUILDING ENVELOPE		
From	To	Distance
T05	BE74	S 79° 17' 5" E - 242.17'
BE74	BE75	S 0° 22' 6" E - 156.19'
BE75	BE76	N 88° 52' 46" E - 85.99'
BE76	BE77	S 0° 22' 6" E - 65.94'
BE77	BE78	N 89° 52' 46" E - 269.38'
BE78	BE79	N 0° 22' 6" W - 231.11'
BE79	BE74	S 88° 52' 46" W - 375.37'
BE74	T05	N 82° 11' 9" E - 428.96'

TRACT 3531		
BUILDING ENVELOPE		
From	To	Distance
T05	BE80	N 57° 20' 5" W - 507.26'
BE80	BE81	N 88° 52' 46" E - 375.36'
BE81	BE82	S 0° 22' 6" E - 232.16'
BE82	BE83	S 88° 49' 16" W - 375.36'
BE83	BE80	N 0° 22' 6" W - 232.33'
BE80	T05	N 82° 10' 58" E - 428.89'

- Legend**
- Retraced Boundary Line (C.O.S. 36 & 36A)
  - Adjoining Boundary Line (C.O.S. 36A thru 36S)
  - Set Alpine Aluminum Cap
  - Found Alpine Aluminum Cap (Unless Otherwise Noted)
  - Found One-Sixteenth Corner
  - Found One-Quarter Section Corner
  - Found Section Corner
  - 50' Wide Utility Easement & Building Setback (Running Parallel To All Lot Lines)
  - Building Envelope
  - 75' Radius Building Site

**CERTIFICATE OF SURVEYOR**

I, Norbert Hackl, the undersigned Professional Land Surveyor, do hereby certify that between October 1, 2004 and November 3, 2005 the accompanying Certificate of Survey was surveyed by me, or under my supervision, and the same was plotted as shown on the accompanying plat and as described, in accordance with the Montana Subdivision and Platting Act, Sections 76-3-101 through 76-3-625 M.C.A., and the Gallatin County Subdivision Regulations.

Dated this 13<sup>th</sup> day of December, 2005.

*Norbert Hackl, PLS*  
Montana Registration No. 14,535 L.S.



**CERTIFICATE OF CLERK AND RECORDER**

I, Shelly Vance, Clerk and Recorder of Gallatin County, Montana, hereby certify that the foregoing instrument was filed in my office at 1:29 o'clock P.M. this 13 day of December A.D. 2005, and recorded as Certificate of Survey No. 36-V records of the Clerk and Recorder, Gallatin County, Montana. Document Number 2212699

2212699  
Page: 1 of 4  
12/13/2005 01:35 PM



**PURPOSES OF SURVEY:**  
1. TO RETRACE THE BOUNDARIES OF CERTAIN TRACTS OF LAND ORIGINALLY CREATED BY C.O.S. 36  
2. TO SHOW THE LOCATION OF ROAD, WATER, SEWER AND OTHER GENERAL UTILITY EASEMENTS

THIS SURVEY WAS PERFORMED FOR SICO MONTANA, LLC

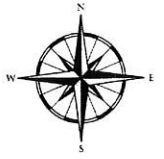
1/4	Sec.	T.	R.	1/4	Sec.	T.	R.
25	35	2 S.	7 E.				



1970 Stadium Drive,  
Suite B  
Bozeman, MT 59715  
586.5599 Office  
586.4490 Fax

PROJECT SURVEYOR: NH	SHEET
DRAWN BY: TG	1 OF 4
REVIEWED BY: NH	TCH-COS
DATE: 11-28-05	PROJECT NO. 015

COS 36V



BASIS OF BEARING  
Geodetic North @  
Autonomous GPS Position  
Lat N 45° 36' 57.987"  
Long. W 110° 49' 26.848"

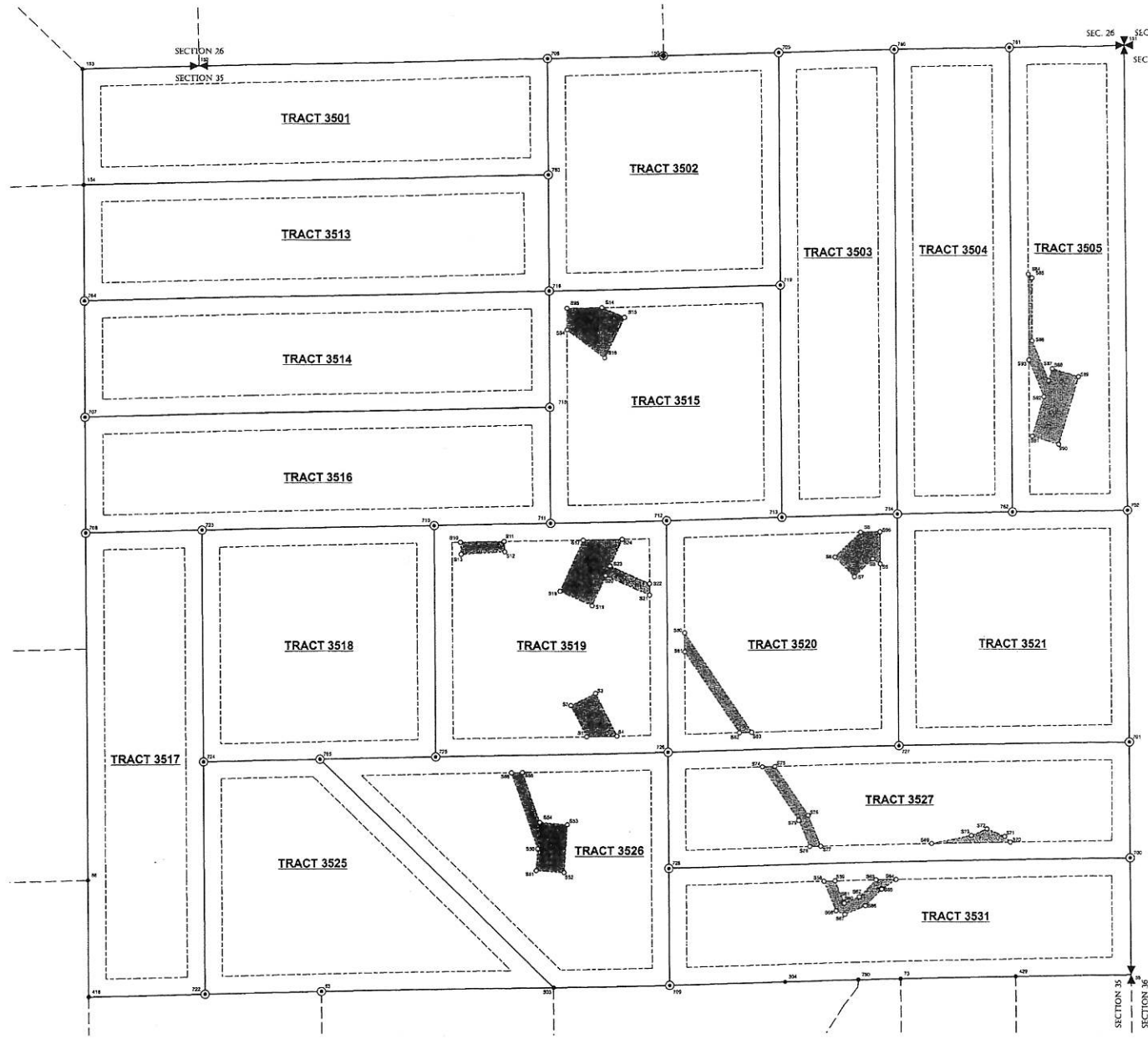
Scale 1" = 200'





**SEWER EASEMENTS**

TRACTS 3501, 3502, 3503, 3504, 3505, 3513, 3514, 3515, 3516, 3517, 3518, 3519, 3520, 3521, 3525, 3526, 3527 & 3531  
 OF CERTIFICATE OF SURVEY No. 36 & 36A  
 LOCATED IN THE NE¼ AND THE E½NW¼ OF SECTION 35,  
 TOWNSHIP 2 SOUTH, RANGE 7 EAST, P.M.M.  
 GALLATIN COUNTY, MONTANA



SEWER EASEMENT AREAS  
 CALLS AND CROSS TIES

TRACT 3505			
From	To	Direction	Distance
761	884	S 47° 43' 51" E	648.97
884	762	S 37° 53' 6" W	683.21
TRACT 3515			
From	To	Direction	Distance
716	814	S 72° 39' 43" E	187.83
814	719	N 63° 10' 26" E	613.52
TRACT 3519			
From	To	Direction	Distance
710	810	S 56° 42' 48" E	88.44
810	811	N 77° 2' 40" E	262.51
811	817	S 82° 29' 53" E	104.36
817	712	N 77° 2' 40" E	244.30
725	81	N 82° 14' 44" E	432.87
81	726	S 78° 57' 0" E	237.17
TRACT 3520			
From	To	Direction	Distance
712	880	S 0° 47' 59" E	625.54
880	726	S 6° 2' 58" W	545.33
713	88	S 73° 34' 18" E	223.74
88	714	N 63° 41' 32" E	117.58
TRACT 3526			
From	To	Direction	Distance
728	858	S 73° 38' 19" E	251.19
858	726	N 82° 1' 9" E	418.58
TRACT 3527			
From	To	Direction	Distance
726	874	S 60° 37' 14" E	274.36
874	727	N 81° 30' 33" E	396.12
728	889	N 85° 5' 10" E	766.07
889	760	S 80° 6' 59" E	873.01
TRACT 3531			
From	To	Direction	Distance
728	858	S 84° 41' 35" E	448.80
858	700	N 85° 37' 53" E	882.92

**Legend**

- Retraced Boundary Line (C.O.S. 36 & 36A)
- Adjoining Boundary Line (C.O.S. 36A thru 36S)
- Set Alpine Aluminum Cap
- Found Property Corner
- Found One-Sixteenth Corner
- Found One-Quarter Section Corner
- Found Section Corner
- 50' Wide Utility Easement & Building Setback (Running Parallel To All Lot Lines)
- Centerline Easement
- Easement Boundary
- Easement Area
- Calculated Sewer Easement Point (See Table)

**Notes**  
 Unless Otherwise Described:  
 All Road Easements Shown Hereon Are 60' Wide.  
 All Power Easements Shown Hereon Are 20' Wide.  
 All Water Easements Shown Hereon Are 30' Wide.  
 All Sewer Easements Shown Hereon Are 30' Wide.

**BASIS OF BEARING**  
 Geodetic North @  
 Autonomous GPS Position  
 Lat N 45° 36' 57.987"  
 Long. W 110° 49' 26.848"

Scale 1" = 200'

2212699  
 Shalley Varco-Gallatin Co RT PLAT 14.00

2212699

**HE HYALITE ENGINEERS, PLLC**  
 2044 STADIUM DRIVE, STE 303, BOZEMAN, MT 59715  
 PHONE: (406) 552-2321 FAX: (406) 552-1923  
 WEB: www.hyaliteeng.com

**PURPOSES OF SURVEY:**  
 1. TO RETRACE THE BOUNDARIES OF CERTAIN TRACTS OF LAND ORIGINALLY CREATED BY C.O.S. 36  
 2. TO SHOW THE LOCATION OF ROAD, WATER, SEWER AND OTHER GENERAL UTILITY EASEMENTS

THIS SURVEY WAS PERFORMED FOR SICO MONTANA, LLC

x/14	Sec.	T.	R.	x/14	Sec.	T.	R.
35	2 S.	7 E.					

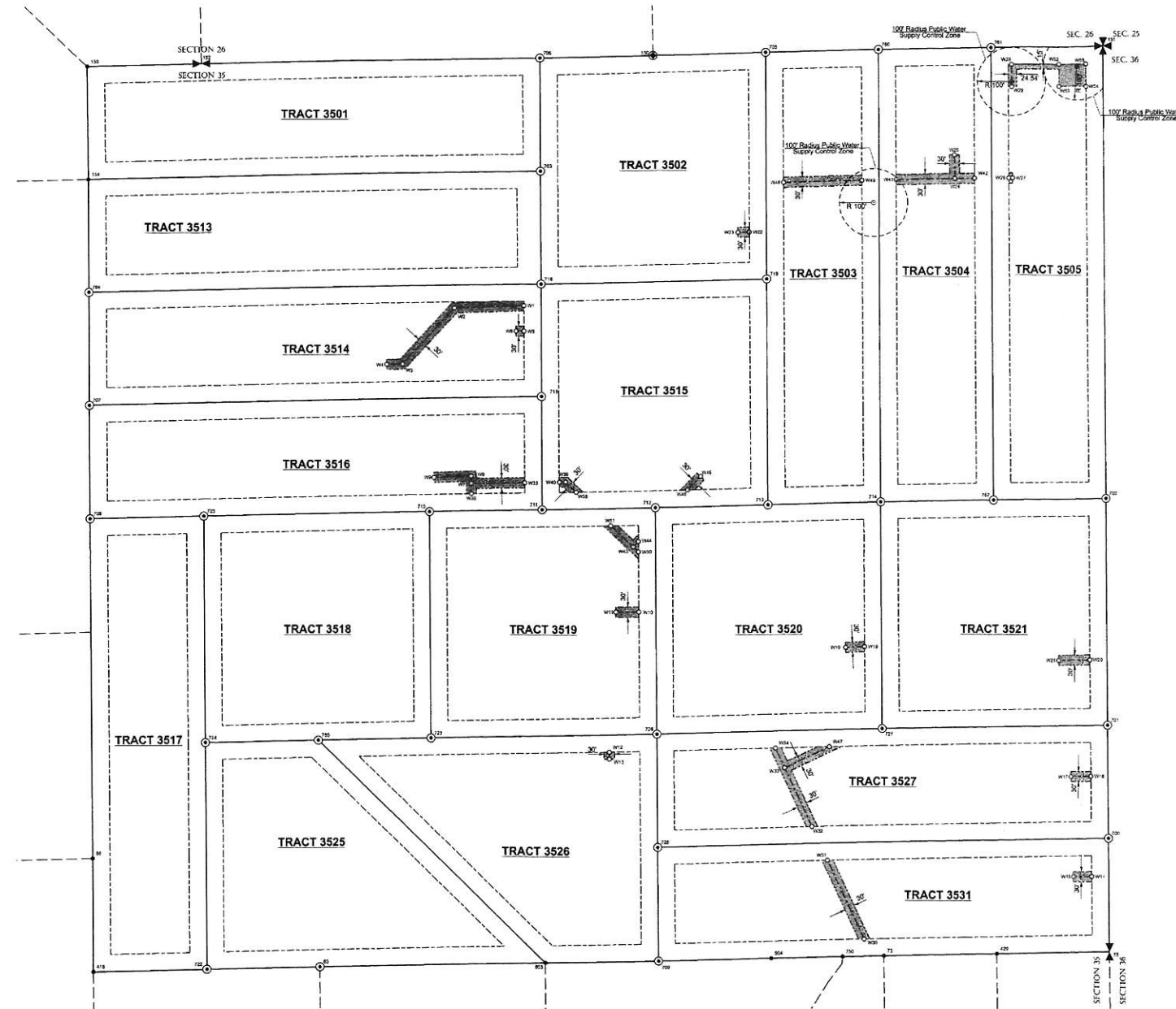
**ALPINE SURVEYING INC.**  
 1970 Stadium Drive,  
 Suite B  
 Bozeman, MT 59715  
 586.5599 Office  
 586.4480 Fax

PROJECT SURVEYOR: NH	SHEET 3 OF 4
DRAWN BY: TG	TCII-COS
REVIEWED BY: NH	
DATE: 11-26-05	PROJECT NO. 015

COS 36V

**PUBLIC WATER LINE EASEMENTS**

TRACTS 3501, 3502, 3503, 3504, 3505, 3513, 3514, 3515, 3516,  
3517, 3518, 3519, 3520, 3521, 3525, 3526, 3527 & 3531  
OF CERTIFICATE OF SURVEY No. 36 & 36A  
LOCATED IN THE NE¼ AND THE E½NW¼ OF SECTION 35,  
TOWNSHIP 2 SOUTH, RANGE 7 EAST, P.M.M.  
GALLATIN COUNTY, MONTANA



WATER EASEMENT CENTERLINE CALLS AND CROSS TIES

TRACT 3502			
From	To	Direction	Distance
W19	W23	N 31° 25' 54" W	161.06'
W22	W25	S 77° 03' 56" E	205.19'
W22	W25	S 77° 03' 56" E	205.19'
TRACT 3503			
From	To	Direction	Distance
W05	W48	S 7° 44' 26" E	354.36'
W48	W50	N 7° 12' 21" E	355.99'
TRACT 3504			
From	To	Direction	Distance
W80	W41	S 7° 45' 46" E	354.37'
W25	W81	N 16° 51' 1" E	332.56'
TRACT 3505			
From	To	Direction	Distance
W52	W27	N 3° 23' 10" E	348.46'
W25	W81	N 7° 46' 15" W	355.16'
W81	W29	S 27° 47' 12" E	129.07'
W52	W51	N 67° 57' 26" E	140.33'
TRACT 3514			
From	To	Direction	Distance
W16	W1	S 37° 41' 19" W	61.36'
W4	W17	S 63° 11' 52" W	231.83'
W17	W6	N 70° 41' 08" E	621.38'
W5	W15	S 14° 45' 22" E	196.73'
TRACT 3515			
From	To	Direction	Distance
W11	W40	N 31° 25' 54" E	161.06'
W29	W12	S 73° 15' 48" E	135.74'
W12	W45	N 61° 25' 5" E	108.58'
W46	W13	S 66° 58' 47" E	214.61'
TRACT 3516			
From	To	Direction	Distance
W15	W35	S 10° 57' 17" W	57.40'
W17	W6	N 70° 41' 08" E	621.38'
W10	W36	N 66° 55' 0" E	133.92'
W39	W11	S 23° 48' 30" W	180.27'
TRACT 3519			
From	To	Direction	Distance
W44	W51	S 77° 7' 27" E	206.42'
W44	W12	N 26° 36' 48" E	110.62'
W12	W10	S 9° 2' 46" W	309.22'
W11	W28	S 18° 15' 51" E	277.11'
TRACT 3520			
From	To	Direction	Distance
W27	W19	N 24° 11' 11" W	260.97'
W19	W18	N 6° 26' 17" E	426.37'
TRACT 3521			
From	To	Direction	Distance
W01	W21	N 37° 21' 43" W	138.03'
W07	W02	N 5° 40' 5" E	475.47'
TRACT 3526			
From	To	Direction	Distance
W26	W12	S 69° 4' 59" W	147.62'
W13	W28	S 28° 17' 8" E	194.09'
TRACT 3527			
From	To	Direction	Distance
W47	W27	N 71° 6' 16" E	183.78'
W32	W28	S 82° 35' 30" W	456.82'
W00	W17	N 31° 34' 50" W	211.46'
W12	W16	N 18° 0' 58" E	158.55'
TRACT 3531			
From	To	Direction	Distance
W28	W31	S 85° 23' 19" E	400.46'
W30	W55	S 67° 12' 31" E	722.43'
W55	W15	N 25° 45' 50" W	243.96'
W12	W14	N 23° 48' 33" E	122.05'

WATER EASEMENT AREA CALLS AND CROSS TIES

TRACT 3505			
From	To	Direction	Distance
W82	W51	N 67° 57' 26" E	140.33'

**Legend**

- Retraced Boundary Line (C.O.S. 36 & 36A)
- Adjoining Boundary Line (C.O.S. 36A thru 36S)
- Set Alpine Aluminum Cap
- Found Property Corner
- Found One-Sixteenth Corner
- Found One-Quarter Section Corner
- Found Section Corner
- 50' Wide Utility Easement & Building Setback (Running Parallel To All Lot Lines)
- Centerline Easement
- Easement Boundary
- Easement Area
- Calculated Water Easement Point (See Table)
- Well
- 100' Radius Public Water Supply Control Zone

**Notes**  
Unless Otherwise Described:  
All Road Easements Shown Hereon Are 60' Wide.  
All Power Easements Shown Hereon Are 20' Wide.  
All Water Easements Shown Hereon Are 30' Wide.  
All Sewer Easements Shown Hereon Are 30' Wide.

**BASIS OF BEARING**  
Geodetic North @  
Autonomous GPS Position  
Lat N 45° 36' 57.987"  
Long. W 110° 49' 26.848"

Scale 1" = 200'

2212699  
12/13/2026 01:39P  
Shelley Vance-Gallatin Co. MT. PLAT 14.00

**HE HYALITE ENGINEERS, PLLC**  
2544 114th Street, Ste 200, Bozeman, MT 59713  
PHONE: (406) 587-3761 FAX: (406) 523-9233  
WEB: www.hyaliteeng.com

PURPOSES OF SURVEY:  
1. TO RETRACE THE BOUNDARIES OF CERTAIN TRACTS OF LAND ORIGINALLY CREATED BY C.O.S. 36  
2. TO SHOW THE LOCATION OF ROAD, WATER, SEWER AND OTHER GENERAL UTILITY EASEMENTS

THIS SURVEY WAS PERFORMED FOR SICO MONTANA, LLC

1/4	Sec.	T.	R.	1/4	Sec.	T.	R.
35	2S.	7E.					

**ALPINE SURVEYING INC.**

1970 Stadium Drive,  
Suite B  
Bozeman, MT 59715  
586.5599 Office  
586.4490 Fax

PROJECT SURVEYOR:	NH	SHEET	4 OF 4
DRAWN BY:	TG	TCII-COS	
REVIEWED BY:	NH	DATE:	11-28-05
PROJECT NO.			015

COS 36V