

COS 36T

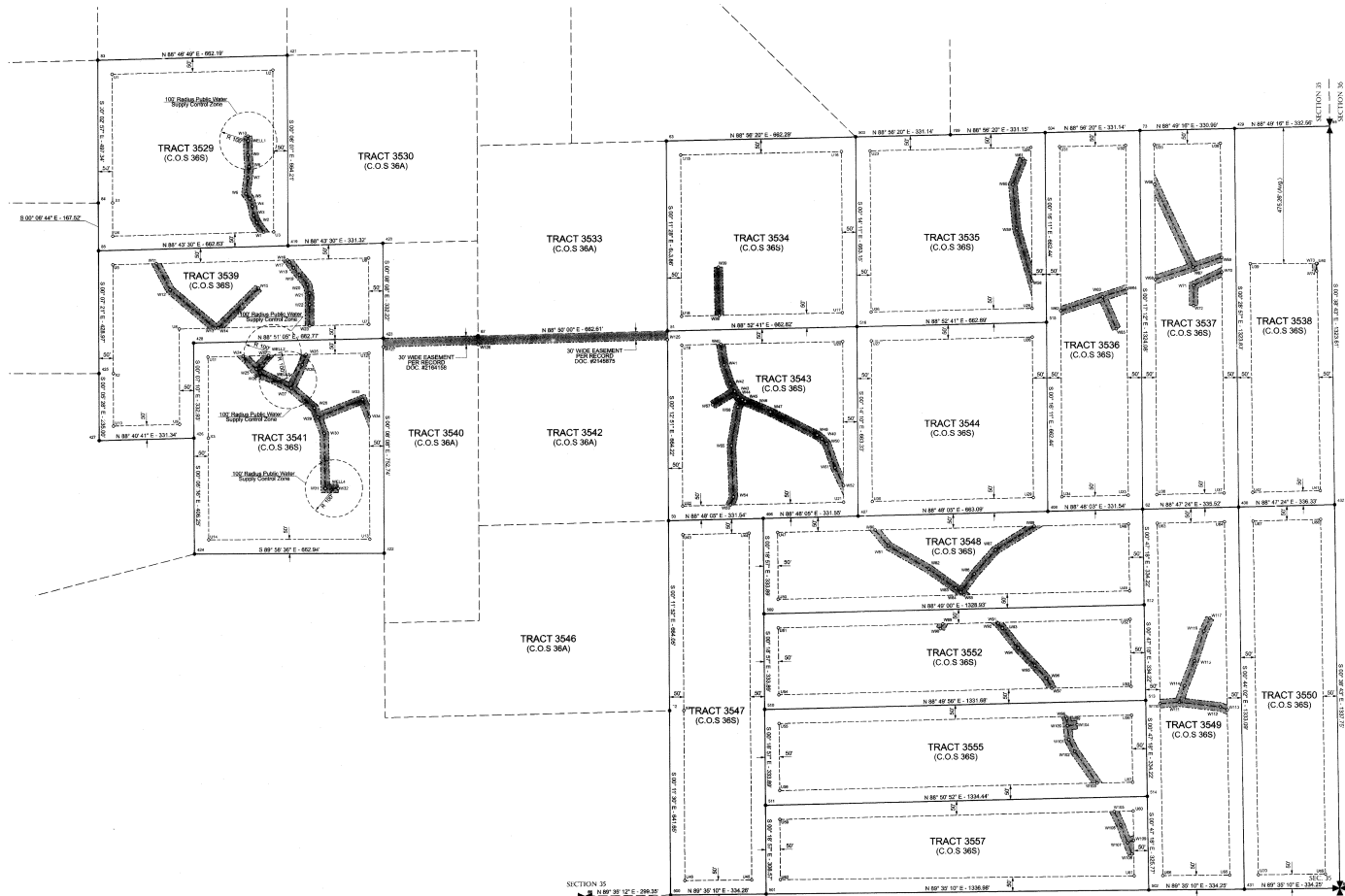
CERTIFICATE OF SURVEY No. 36T

WATER SYSTEM EASEMENTS

LOCATED IN THE NW¼, THE SW¼
AND THE SE¼ OF SECTION 35,
TOWNSHIP 2 SOUTH, RANGE 7 EAST, P.M.M.
GALLATIN COUNTY, MONTANA

PURPOSE OF SURVEY:
TO SHOW THE LOCATION OF WATER, SEWER
AND OTHER GENERAL UTILITY EASEMENTS
ON EXISTING TRACTS OF LAND

FOR: SICO MONTANA, LLC



- Legend**
- Surveyed Boundary Line (C.O.S. 36S)
 - - - Calculated Boundary Line (C.O.S. 36A)
 - Property Corner
 - Found One-Quarter Section Corner
 - Found Section Corner
 - Water Line Easement Centerline
 - - - Water Line Easement Boundary
 - Well
 - 100' Radius Public Water Supply Control Zone
 - - - 50' Wide Utility Easement Boundary
 - Area of Water Line Easement Established By This Survey
 - Calculated Position

Notes
All Water Line Easements Shown Hereon Are 30' Wide Unless Otherwise Described In The Water Easement Line Tables On Sheet 3 Of This Survey

BASIS OF BEARING
Geodetic North @ Autonomous GPS Position
Lat N 45°36'57.867
Long W 110°45'26.948
Scale 1" = 200'

CERTIFICATE OF SURVEYOR
I, Norbert Hackl, the undersigned Professional Land Surveyor do hereby certify that between October 1, 2004 and November 16, 2004 the accompanying Certificate of Survey was surveyed by me, or under my supervision, and the same was plotted as shown on the accompanying plat and as described, in accordance with the Montana Subdivision and Platting Act Sections 76-5-101 through 76-5-625 M.C.A., and the Gallatin County Subdivision Regulations.
Dated this 12th day of Mar 2005
Norbert Hackl
Norbert Hackl, P.L.S.
Montana Registration No. 14,535 L.S.



CERTIFICATE OF CLERK AND RECORDER
I, Shelly Vance, Clerk and Recorder of Gallatin County, Montana hereby certify that the foregoing instrument was filed in my office at 4:01 o'clock P.M. the 17th day of Mar A.D. 2005 and recorded as Certificate of Survey No. 36T records of the Clerk and Recorder, Gallatin County, Montana. Document Number: 2187953



114	Sec. T. R.	114	Sec. T. R.		19 North 10th Street, Suite 5 Bozeman, MT 59715 596.5599 Office 596.4490 Fax	PROJECT SURVEYOR	NH	SHEET 1 OF 3 Easements	
35	2 S. 7 E.					DRAWN BY	T.G.		
				REVIEWED BY	NH	DATE	3/17/05	PROJECT NO.	015