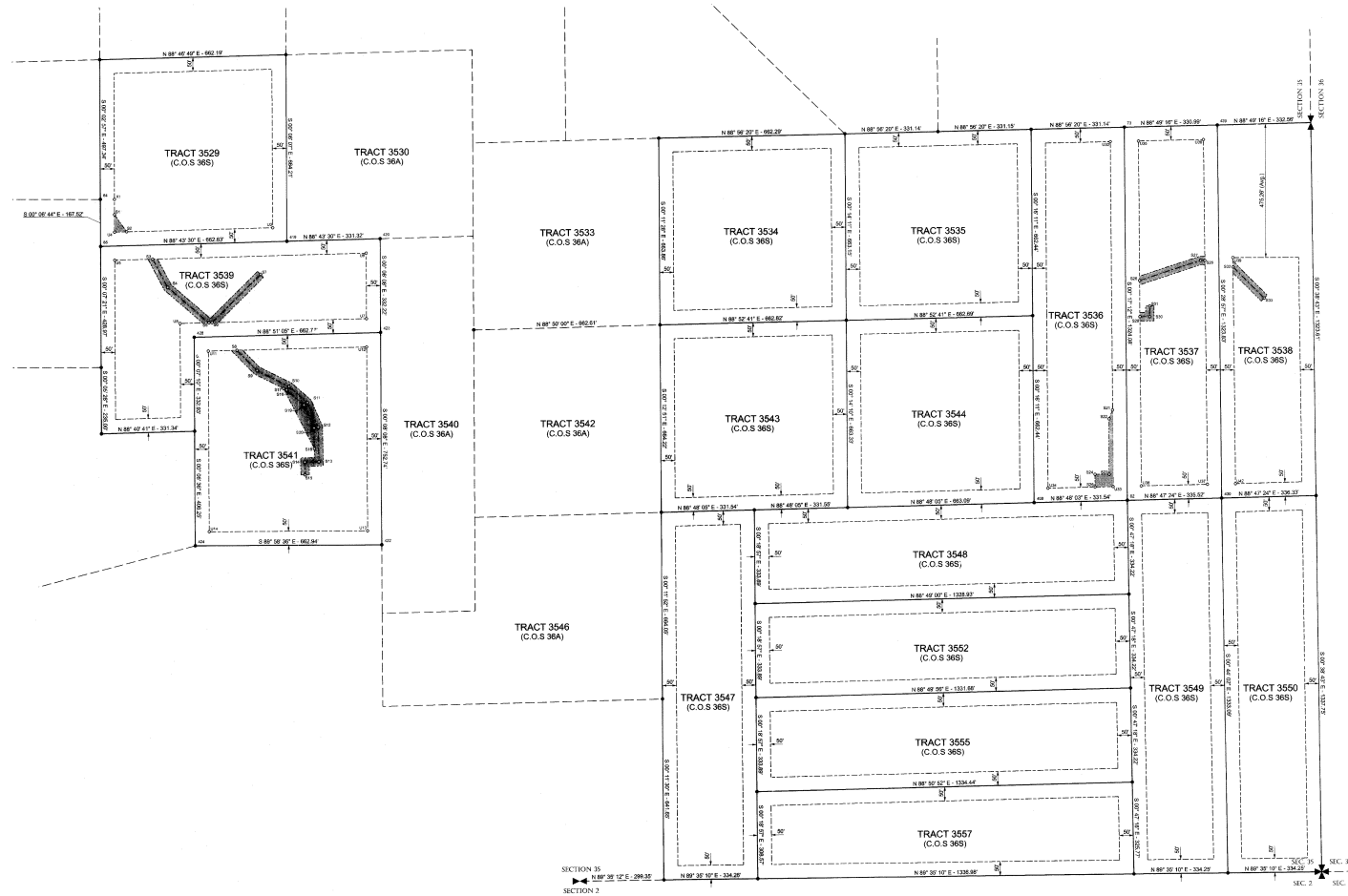


**SEWER SYSTEM EASEMENTS**

LOCATED IN THE NW¼, THE SW¼  
AND THE SE¼ OF SECTION 35,  
TOWNSHIP 2 SOUTH, RANGE 7 EAST, P.M.M.  
GALLATIN COUNTY, MONTANA

PURPOSE OF SURVEY:  
TO SHOW THE LOCATION OF WATER, SEWER  
AND OTHER GENERAL UTILITY EASEMENTS  
ON EXISTING TRACTS OF LAND  
FOR: SICO MONTANA, LLC



COS 36T

- Legend**
- Surveyed Boundary Line (C.O.S. 36S)
  - Calculated Boundary Line (C.O.S. 36A)
  - Property Corner
  - Found One-Quarter Section Corner
  - Found Section Corner
  - Sewer Line Easement Centerline
  - Sewer Line Easement Boundary
  - 50' Wide Utility Easement Boundary
  - Area of Sewer Line Easement Established By This Survey
  - Calculated Position

**Notes**  
All Sewer Line Easements Shown Hereon Are 30' Wide Unless Otherwise Described In The Sewer Easement Line Tables On Sheet 3 Of This Survey

**BASIS OF BEARING**  
Geodetic North @  
Autonomous GPS Position  
Lat N 45°36'57.887"  
Long W110°49'26.848"  
Scale 1" = 200'

1/4	Sec.	T.	R.	1/4	Sec.	T.	R.
35	2 S.	7 E.					



19 North 10th Street,  
Suite 5  
Bozeman, MT 59715  
596.5599 Office  
596.4490 Fax

PROJECT SURVEYOR	NH	SHEET
DRAWN BY	TG	2 OF 3
REVIEWED BY	NH	Easements
DATE	3/10/17	PROJECT NO.

2187953  
24th - 25th  
04/17/2005 04:48P  
Scale: 1/8" = 100' 11.60