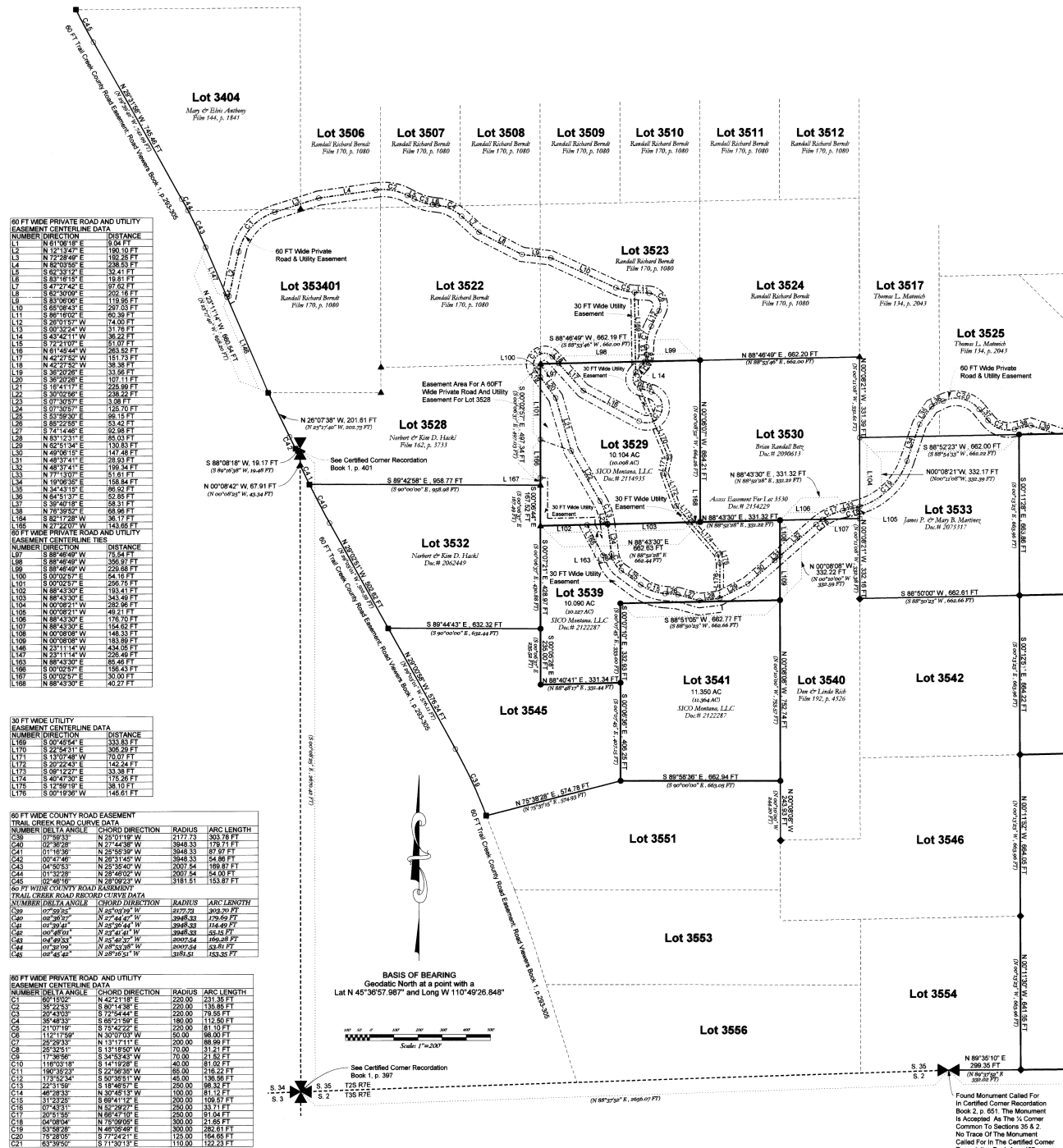


# CERTIFICATE OF SURVEY NO. 36 S

Located in the NE¼, NW¼, SW¼ and SE¼ of Section 35 and the NE¼ of Section 34 Township 2 South, Range 7 East, P.M.M., Gallatin County, Montana

**Purpose of Survey:** To retrace and monument existing Tracts 3529, 3534, 3536, 3537, 3538, 3539, 3541, 3543, 3544, 3547, 3548, 3549, 3550, 3552, 3555 & 3557 of Certificate of Survey No. 36A, located in the SE¼, SW¼, NW¼ & NE¼ of Section 35 & the NE¼ of Section 34, Township 2 South, Range 7 East, P.M.M., on record in the office of the Clerk and Recorder of Gallatin County, Montana and to show new private road utility and trail easements for SICO Montana, LLC.  
No new tracts were created.



**60 FT WIDE PRIVATE ROAD AND UTILITY EASEMENT CENTERLINE DATA**

NUMBER	DIRECTION	DISTANCE
L1	N 61° 08' 18\"	104.04 FT
L2	N 12° 12' 42\"	190.10 FT
L3	N 72° 28' 48\"	192.58 FT
L4	N 82° 03' 50\"	238.55 FT
L5	S 82° 33' 18\"	194.41 FT
L6	S 83° 18' 15\"	198.81 FT
L7	S 47° 27' 42\"	92.62 FT
L8	S 85° 30' 09\"	202.18 FT
L9	S 85° 08' 43\"	192.62 FT
L10	S 85° 08' 43\"	297.55 FT
L11	S 86° 18' 18\"	92.36 FT
L12	S 20° 21' 51\"	192.62 FT
L13	S 00° 32' 52\"	31.78 FT
L14	S 45° 44' 11\"	192.62 FT
L15	S 21° 21' 01\"	51.07 FT
L16	N 61° 08' 18\"	151.73 FT
L17	N 42° 22' 52\"	192.62 FT
L18	N 42° 22' 52\"	31.78 FT
L19	S 30° 26' 52\"	192.62 FT
L20	S 16° 41' 11\"	225.58 FT
L21	S 16° 41' 11\"	225.58 FT
L22	S 00° 32' 52\"	238.55 FT
L23	S 00° 32' 52\"	192.62 FT
L24	S 01° 30' 57\"	126.70 FT
L25	S 01° 30' 57\"	126.70 FT
L26	S 88° 22' 68\"	53.42 FT
L27	S 71° 14' 48\"	92.62 FT
L28	N 83° 12' 31\"	82.03 FT
L29	N 83° 12' 31\"	28.93 FT
L30	N 49° 08' 18\"	147.48 FT
L31	N 49° 08' 18\"	28.93 FT
L32	N 49° 37' 41\"	192.62 FT
L33	N 77° 31' 00\"	51.07 FT
L34	N 19° 08' 18\"	151.73 FT
L35	N 34° 43' 15\"	86.92 FT
L36	N 34° 43' 15\"	86.92 FT
L37	S 30° 40' 18\"	58.31 FT
L38	S 30° 40' 18\"	58.31 FT
L39	N 42° 22' 52\"	31.78 FT
L40	N 42° 22' 52\"	31.78 FT
L41	S 00° 32' 52\"	192.62 FT
L42	S 00° 32' 52\"	192.62 FT

**60 FT WIDE PRIVATE ROAD AND UTILITY EASEMENT CENTERLINE TIES**

NUMBER	DIRECTION	DISTANCE
L87	S 88° 48' 49\"	75.54 FT
L88	S 88° 48' 49\"	226.88 FT
L89	S 88° 48' 49\"	226.88 FT
L90	S 00° 02' 51\"	145.15 FT
L91	S 00° 02' 51\"	256.75 FT
L92	N 88° 43' 30\"	124.41 FT
L93	N 88° 43' 30\"	268.55 FT
L94	N 00° 08' 21\"	282.96 FT
L95	N 00° 08' 21\"	42.11 FT
L96	N 88° 43' 30\"	117.61 FT
L97	N 88° 43' 30\"	144.33 FT
L98	N 00° 08' 21\"	148.33 FT
L99	N 00° 08' 21\"	148.33 FT
L100	N 23° 11' 14\"	434.05 FT
L101	N 23° 11' 14\"	434.05 FT
L102	S 88° 43' 30\"	86.49 FT
L103	S 88° 43' 30\"	86.49 FT
L104	S 00° 02' 51\"	30.00 FT
L105	N 88° 43' 30\"	40.27 FT

**30 FT WIDE UTILITY EASEMENT CENTERLINE DATA**

NUMBER	DIRECTION	DISTANCE
L106	S 00° 44' 51\"	333.83 FT
L107	S 24° 54' 51\"	306.29 FT
L108	S 13° 10' 40\"	220.00 FT
L109	S 20° 22' 43\"	142.24 FT
L110	S 00° 12' 21\"	158.38 FT
L111	S 40° 47' 50\"	175.25 FT
L112	S 12° 58' 19\"	158.38 FT
L113	S 00° 19' 50\"	146.61 FT

**60 FT WIDE COUNTY ROAD EASEMENT TRAIL CREEK ROAD CURVE DATA**

NUMBER	DELTA ANGLE	CHORD DIRECTION	RADIUS	ARC LENGTH
C39	07° 09' 35\"	N 27° 04' 38\"	3848.33	178.77 FT
C40	07° 36' 28\"	N 27° 44' 38\"	3848.33	178.77 FT
C41	01° 18' 59\"	N 28° 03' 58\"	3848.33	178.77 FT
C42	00° 47' 48\"	N 28° 31' 45\"	3848.33	178.77 FT
C43	04° 30' 53\"	N 28° 35' 40\"	2607.54	166.87 FT
C44	04° 33' 28\"	N 28° 48' 02\"	2607.54	166.87 FT
C45	07° 46' 18\"	N 28° 39' 32\"	3181.81	153.87 FT

**60 FT WIDE PRIVATE ROAD AND UTILITY EASEMENT CENTERLINE DATA**

NUMBER	DELTA ANGLE	CHORD DIRECTION	RADIUS	ARC LENGTH
C1	89° 15' 02\"	N 42° 21' 18\"	220.00	231.36 FT
C2	39° 22' 35\"	N 49° 14' 08\"	220.00	135.85 FT
C3	26° 43' 33\"	S 77° 54' 44\"	220.00	79.56 FT
C4	31° 46' 33\"	S 65° 21' 58\"	190.00	112.50 FT
C5	21° 07' 18\"	S 75° 42' 22\"	220.00	81.10 FT
C6	11° 51' 19\"	N 13° 17' 11\"	200.00	88.89 FT
C7	25° 29' 33\"	S 34° 53' 45\"	70.00	21.82 FT
C8	29° 36' 58\"	S 34° 53' 45\"	40.00	10.91 FT
C9	11° 51' 19\"	S 14° 17' 11\"	80.00	21.82 FT
C10	11° 51' 19\"	S 30° 59' 31\"	40.00	10.91 FT
C11	11° 51' 19\"	S 30° 59' 31\"	80.00	21.82 FT
C12	11° 51' 19\"	S 30° 59' 31\"	40.00	10.91 FT
C13	11° 51' 19\"	S 30° 59' 31\"	80.00	21.82 FT
C14	48° 29' 33\"	N 30° 45' 13\"	100.00	81.10 FT
C15	11° 51' 19\"	S 30° 59' 31\"	80.00	21.82 FT
C16	07° 43' 31\"	N 55° 27' 09\"	200.00	133.11 FT
C17	07° 43' 31\"	N 55° 27' 09\"	200.00	133.11 FT
C18	04° 08' 04\"	N 75° 09' 09\"	300.00	218.85 FT
C19	53° 08' 26\"	N 48° 35' 48\"	300.00	282.61 FT
C20	72° 28' 05\"	S 71° 24' 49\"	125.00	164.86 FT
C21	63° 39' 50\"	S 71° 30' 13\"	110.00	122.23 FT

**Legend**

- 5/8" X 24" Rebar Filled With A 2" Aluminum Cap Set This Survey
- 5/8" X 24" Rebar Filled With A 1 1/2" Aluminum Cap Marked SURCO INC 3104S Found This Survey
- 5/8" X 24" Rebar Filled With A 2" Aluminum Cap Marked SURCO 5426S Found This Survey
- 5/8" X 24" Rebar Filled With A 2" Aluminum Cap Marked WESTERN M734S Found This Survey
- Calculated Point, No Monument Set This Survey
- Retraced Tract Boundary
- Tie To Found Monuments
- Unretraced Tract Boundary
- Section Line
- Centerline Of Private Road And/Or Utility Easement
- Boundary Of Private Road And/Or Utility Easement
- Record Data (C.O.S. No. 36A)

**CERTIFICATE OF SURVEYOR**

I, Norbert Hackl, the undersigned Professional Land Surveyor, do hereby certify that between July 1, 2003 and September 17, 2004 the accompanying Certificate of Survey was surveyed by me, or under my supervision, and the same was plotted as shown on the accompanying plat and as described, in accordance with the Montana Subdivision and Platting Act, Sections 76-3-101 through 76-3-625 M.C.A., and the Gallatin County Subdivision Regulations.

Dated this 2nd day of December, 2004.

*Norbert Hackl*  
Norbert Hackl  
Montana Registration No. 14,635 L.S.  
3720 Trail Creek Road  
Bozeman, Montana 59715  
Phone: (406) 586-5599

**CERTIFICATE OF CLERK AND RECORDER**

I, Shelly Varco, Clerk and Recorder of Gallatin County, Montana, hereby certify that the foregoing instrument was filed in my office at 1:52 o'clock P.M. this 2nd day of December, A.D. 2004, and recorded as Certificate of Survey No. 36S records of the Clerk and Recorder, Gallatin County, Montana.

Document Number 2171771

2171771  
Page 1 of 2  
12-02-2004 01:52 PM  
Shelly Varco-Gallatin Co RT PLAT 14-00

**ALPINE SURVEYING**

3720 Trail Creek Rd Bozeman, MT 59715  
Phone/Fax 586.6288 - Cell 628.0048

Drawn By: H. Hackl  
Checked By: H. Hackl  
Reviewed By: H. Hackl

Date: 2/23/04  
3/15/04  
10/03/04

Sheet No. 1 of 2